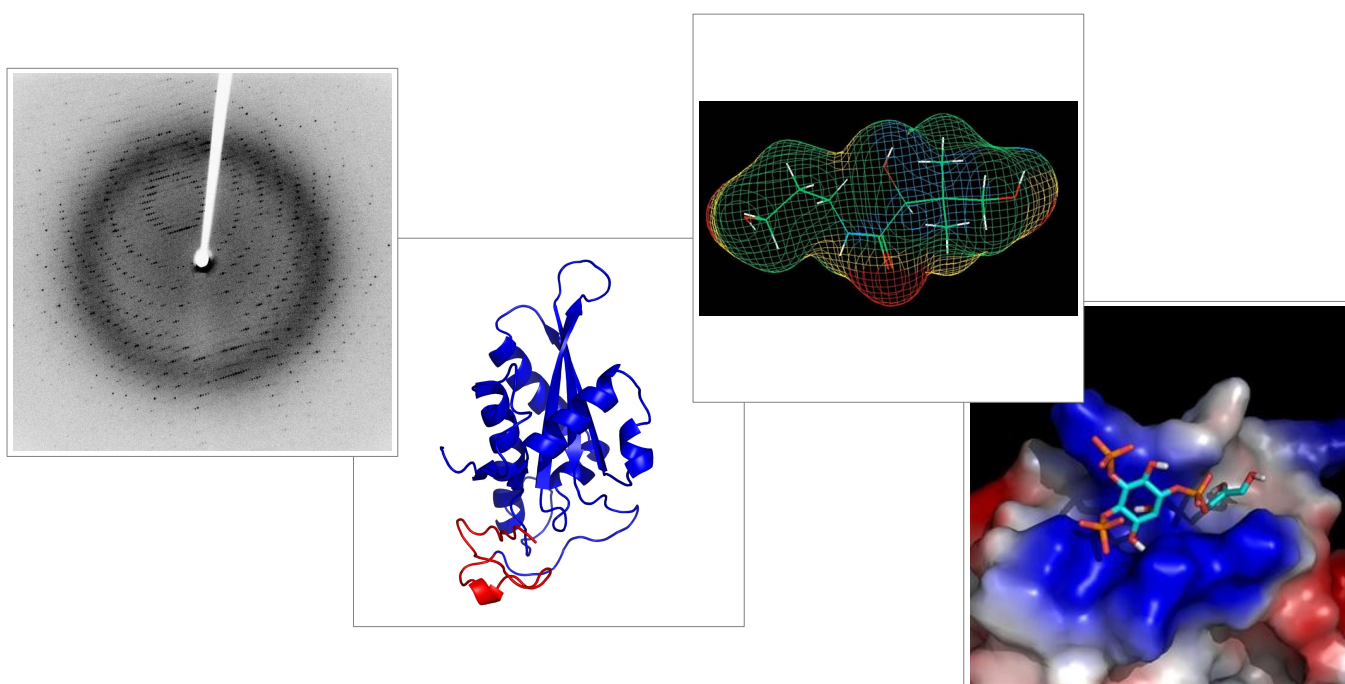


South-East Queensland Structural Biology Symposium

Friday, 23 November 2012

Griffith University EcoCentre
Building N68, Griffith University Nathan Campus



Supported by



John Morris Scientific
Service plus Solutions



SIGMA-ALDRICH®

South-East Queensland Structural Biology Symposium

Friday, 23 November 2012

Keynote speaker: Dr Peter Czabotar, WEHI

Programmed cell death is a biological process crucial for tissue development and homeostasis. Its dysregulation can lead to a variety of disease states; for example, evasion of cell death is a key step in tumorigenesis, whilst excessive cell death characterizes a number of degenerative disorders. Understanding the molecular details of the pathways controlling this process, in particular those involving the Bcl-2 family of proteins, is the primary research focus of Dr Czabotar. He has solved structures for complexes of various Bcl-2 family members providing insights into how these interactions control cell death and informing the development of therapeutics.

He is an ARC Future Fellow and has recently been appointed as a Laboratory Head at the Walter and Eliza Hall Institute of Medical Research.

South-East Queensland Structural Biology Symposium

Friday, 23 November 2012

Programme

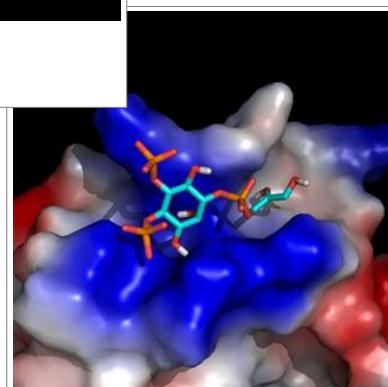
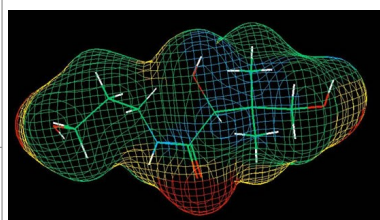
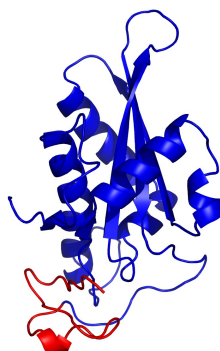
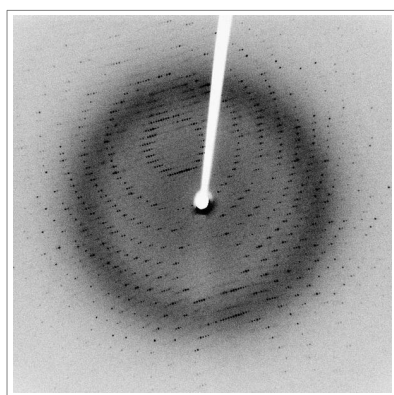
- 11.00 – 11.30 **Arrival and Morning Tea**
- 11.30 – 12.10 **Peter Czabotar (WEHI)**
Apoptosis and the structural biology of Bcl-2 family proteins
- 12.10 – 12.30 **Michael Landsberg (UQ)**
Piecing together the structure of a novel multisubunit bacterial toxin
- 12.30 – 12.50 **Zhi Guang Jia (UQ)**
Recognition of proteins at membrane surfaces
- 13.00 – 13.45 **Lunch**
- 13.50 – 14.10 **Roisin McMahon (UQ)**
Structure and function of *Bps*-DsbA
- 14.10 – 14.30 **Obayed Ullah (UQ)**
Structural biology of TRIF, adaptor proteins in TLR signalling pathways in humans
- 14.30 – 14.50 **Simone Reynolds (QIMR)**
Structural analysis of Scabies Mite Inactivated Serine Protease Paralogues
- 14.50 – 15.10 **Rachael McGeorge (QIMR)**
tba
- 15.10 – 15.40 **Afternoon Tea**
- 15.40 – 16.00 **Joe Tiralongo (GU)**
Identifying structural elements that confer CMP-sialic acid transporter substrate specificity
- 16.00 – 16.20 **Linda Haugaard-Kedstrom (UQ)**
tba
- 16.20 – 16.40 **Saroja Weeratunga (GU)**
Alpha-1 giardin is an annexin with highly unusual calcium-regulated mechanisms
- 16.40 – 17.00 **Oleksiy Kovtun (UQ)**
Structural basis for the assembly of the cavin complex and its role in caveolar membrane budding
- 17.00 – 18.00 **Mixer**

South-East Queensland Structural Biology Symposium

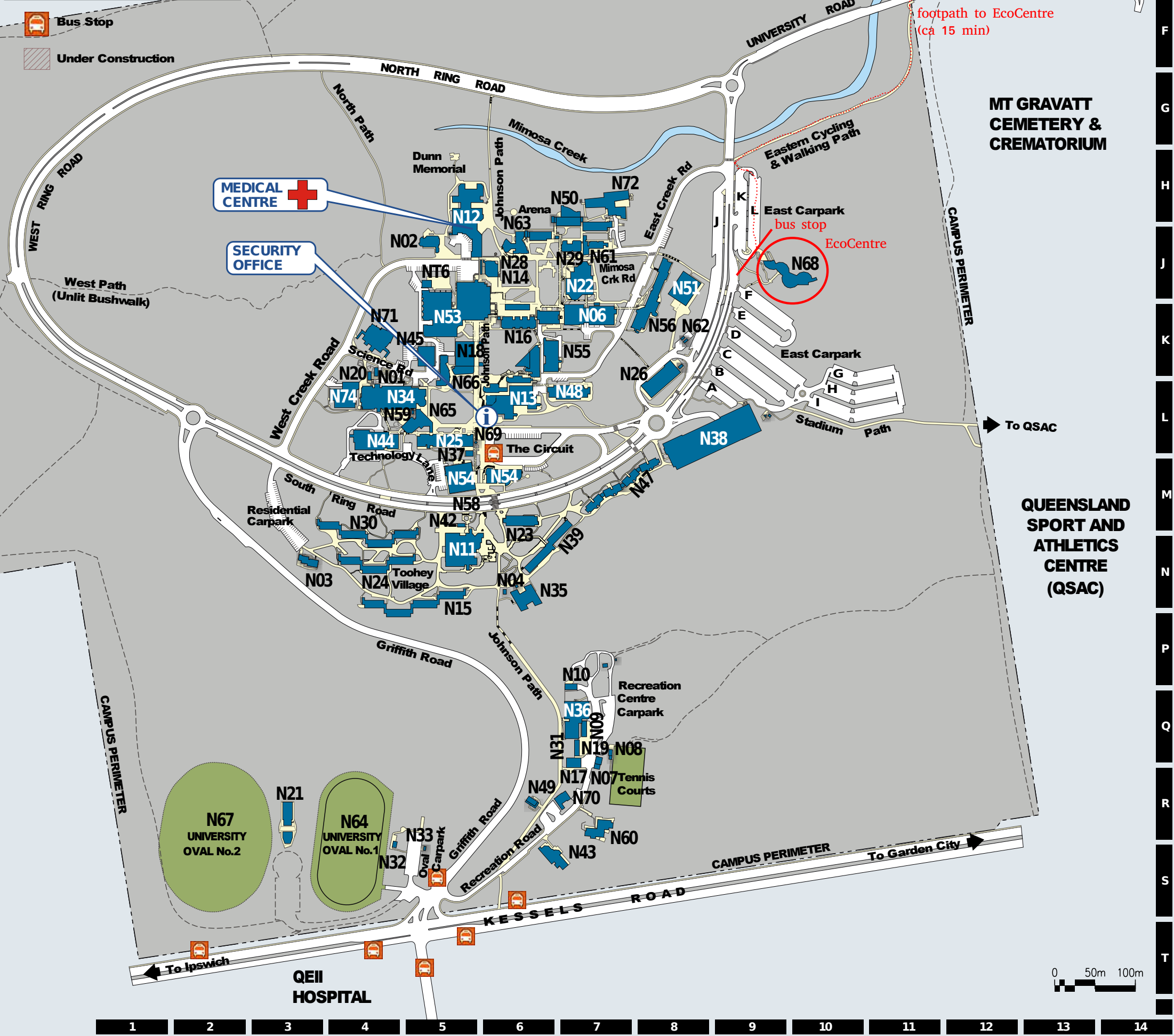
Friday, 23 November 2012

Griffith University EcoCentre
Building N68, Griffith University Nathan Campus

**Parking voucher for the gravel
car park at N27/N75 (Forest
Court). Display at dash board.**



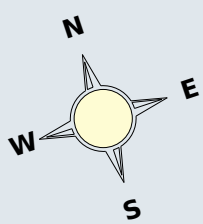
Building Legend			
N01. Flammable Liquid Store	(K4)	N38. Ridge Carpark	(L8)
N02. Cinema	(J5)	N39. Bellenden Ker College	(N6)
N03. Gumurrii Centre	(N3)	N40. Flammable Liquid Store 2	(D13)
N04. Pump House	(N6)	N41. Gas Store	(D13)
N06. Patience Thoms	(K7)	N42. Electrical Substation S9	(M5)
N07. Boatshed	(Q7)	N43. Tallowood Child Care Centre	(R6)
N08. Tennis Court Shelter	(Q7)	N44. Technology	(L4)
N09. Nathan Landscape Store	(Q7)	N45. Central Chiller Plant	(K5)
N10. Campus Life Shed	(Q7)	N47. Camarvon College	(M7)
N11. The Hub	(N5)	N48. Health Sciences	(L7)
N12. Sewell	(H5)	N49. School Age Care	(R6)
N13. Environment 2	(L6)	N50. Business 1	(J6)
N14. Enternet Cafe	(J6)	N51. University Store	(J8)
N15. Barakula College	(N5)	N53. Willett Centre	(K5)
N16. Macrossan	(K6)	N54. Bray Centre	(M5)
N17. Landscape Centre	(R7)	N55. Environment 1	(K6)
N18. Central Theatres	(K5)	N56. Languages	(K8)
N19. GU Fire Station	(Q7)	N58. Johnson Tunnel	(M5)
N20. Dangerous Chemicals Store	(L4)	N59. Gardeners Shed	(L5)
N21. The Pavillion	(R3)	N60. Boronia Child Care Centre	(R7)
N22. Northern Theatres 1&2	(J7)	N61. Law	(J7)
N23. Facilities Management	(M6)	N62. OFM Compound	(K8)
N24. Girraween College	(N4)	N63. Graduate School of Management	(J6)
N25. Science 1	(L5)	N64. Oval 1	(R4)
N26. Maintenance & Uni Print	(L8)	N65. Science Link & Common Room	(L5)
N27. Eskitis 2	(D12)	N66. Community Centre	(K5)
N28. Library Plaza Bookshop	(J6)	N67. Oval 2	(R2)
N29. Northern Theatres 3,4&5	(J7)	N68. Eco Centre	(J9)
N30. Kinaba College	(N4)	N69. Automatic Teller Machine	(L5)
N31. Electrical Substation S1	(Q7)	N70. Child Care Services	(R7)
N32. Oval Shelter	(S4)	N71. GU Campus Club	(K4)
N33. Oval Toilets	(S5)	N72. Business 2	(H7)
N34. Science 2	(L4)	N74. Queensland Microtechnology Facility	(L4)
N35. Multi Faith Centre	(N6)	N75. Eskitis 1	(D12)
N36. Nathan Sports Centre	(Q7)	NT6. Gumurrii Centre RAC Demountable	(J5)
N37. Electrical Substation S2	(M5)		



Nathan campus

General site map

current @ January 2007



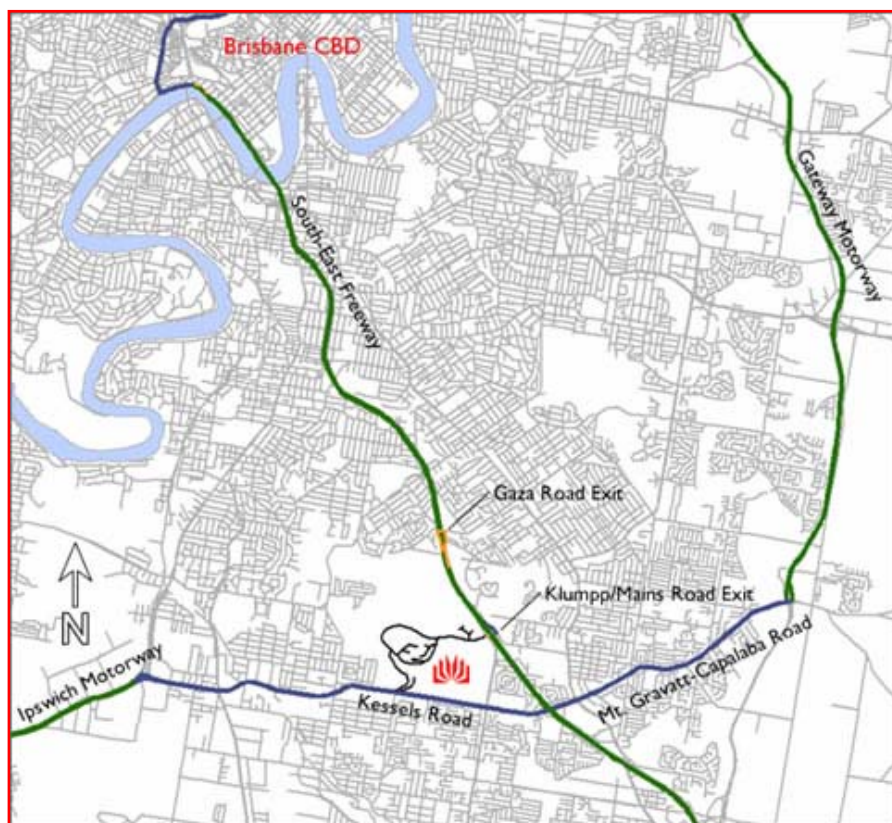
A
B
C
D
E
F
G
H
J
K
L
M
N
P
Q
R
S
T

1 2 3 4 5 6 7 8 9 10 11 12 13 14

By Car

From the City

1. Leave the City via the South-East Freeway and proceed approximately eight kilometres south.
2. Exit the freeway on Exit 11 - Klumpp Road/Mains Road (Note: do not exit the Freeway at the Marshall Road exit - the Griffith University sign here refers to our Mt Gravatt campus).
3. On exiting the freeway bear to the right (down hill towards Mains Road, rather than bearing left to Klumpp Road) and get in right hand lane.
4. Turn right under the freeway at the first set of lights into University Road (move into left lane).
5. Proceed straight ahead under the freeway, through the lights and straight on through the first roundabout into Griffith University.
6. Turn left at the next roundabout onto the Ring Road.
7. The first car parks on your left (K, L, F and E) are located next to the EcoCentre.



From the Gold Coast

1. Take the Gazza Road exit from the South-East Freeway (heading towards the City).
2. Proceed in right lane to first set of lights - turn right into Gaza Road.

3. Go under the freeway to the next set of lights (about 100 metres) and turn right onto the South-East Freeway (now heading south).
4. Take the first exit (Klumpp Road/Main Road) and proceed as above.

From East/West along Kessels Road

1. Proceed along Kessels Road and turn into Griffith University at the QEII Hospital/Griffith University traffic lights. This is a right turn if coming from the East (from Garden City) or a left turn if coming from Coopers Plains/Salisbury.
2. Drive up Griffith Road and turn right at the roundabout (Ring Road).
3. Continue along the Ring Road and pass straight through the roundabout.
4. At the second roundabout do a u-turn and continue back along the Ring Road. The first car parks now on your left (K, L, F and E) are located next to the EcoCentre.

From Sunshine Coast

1. Heading south along the Gateway Motorway, take the Mount Gravatt-Capalaba Road Exit, approximately 12km south of the Gateway Bridge.
2. Turn right onto Mount Gravatt-Capalaba Road, and continue straight along the road. Upon crossing Logan Road, the road becomes Kessels Road.
3. Proceed along Kessels Road and turn right into Griffith University at the QEII hospital /Griffith University traffic lights.

Bus

Several bus services run direct to the Nathan campus from:

<u>City</u>	<u>Garden City</u>	<u>Brown Plains</u>
- 134	- 119	- 145
- 135	- 120	
- 155	- 125	<u>Capalaba</u>
	- 260	- 260

Other bus routes provide frequent service to the Griffith University Busway Station:

- 111	- 130	- 140
- 150	- 160	

From the Busway Station use **Platform 1** to transfer onto the Griffith University Intercampus bus or the 134, 135, 155 or 260 for services to the Nathan campus.

For timetable information please visit [TransLink](#).

Bicycle

The Nathan campus is accessible by bicycle with bikeways running alongside the South East Freeway from the City and Garden City. Brisbane City Council publishes a handy guide, "Brisbane Bicycle Maps" which is available in hard copy from Brisbane City Council on (07) 3403 8888 or [online](#). Nathan Campus is located at the bottom of map 8 or the top of map 11.